

# Eddy Current Dyno Controller Setup Screen

Set default settings, then click on the Tune button to send to controller (send settings via USB to controller).

When you click the Tune button to load these settings into the controller, the steps are shown here. Also shown is the version of the firmware (program) in the controller, like 1.51.

**Controller Settings**

Tune Test Ramp

Controller Settings Defaults

Controller On Yes Com Port 12 Find

Type Eddy Current RPM Feedback

Higher Number Increases Load No

Ramp Rate 5

Proportional Setting 150

Integral Setting 10

Derivative Setting 400

PID Control Loop, mSec 10

Display On (No) Yes

Pulses Per Rev for RPM 1

Max RPM To Control 6000

**Notes:**  
Click the 'Defaults' button to load typical default values. Use 'Tune' button to check 'Higher Number Increases Load' and to see how fast the 'Ramp, count/mSec' setting moves the valve (the HIGHER the 'Ramp, count/mSec', the SLOWER the movement).

Keep Settings Help Cancel Print

Click here to load typical default values after choosing Eddy Current RPM Feedback

Click here to find which com ports your controller could be connected to.

Choose Eddy Current here first to set up other settings correctly on this screen.

Enter a number to change the rate at which RPM is changed when you start recording data for a test. NOTE: A higher number means a slower ramp rate.

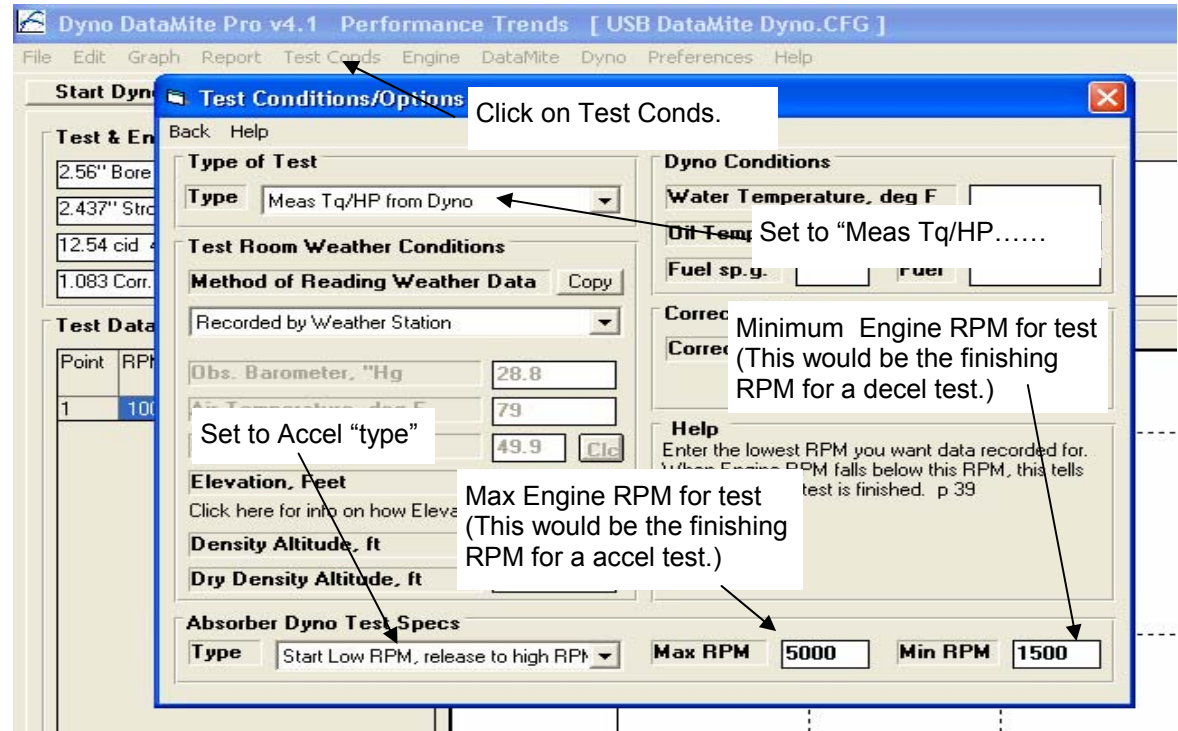
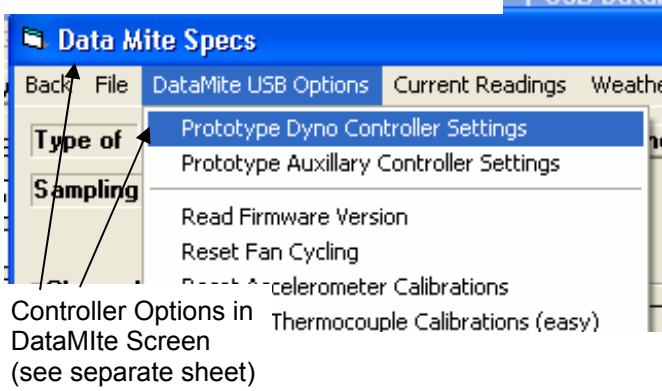
Enter a number to indicate how often the controller should update. Firmware v1.51 or later can both update the display and provide good control at a Control Loop of 10 mSec or faster.

Prior to v1.51 firmware, you would have to turn the Display Off to have good, fast control. With v1.51 firmware or later, you can always have the Display On with a PID Control Loop, mSec of about 10 mSec.

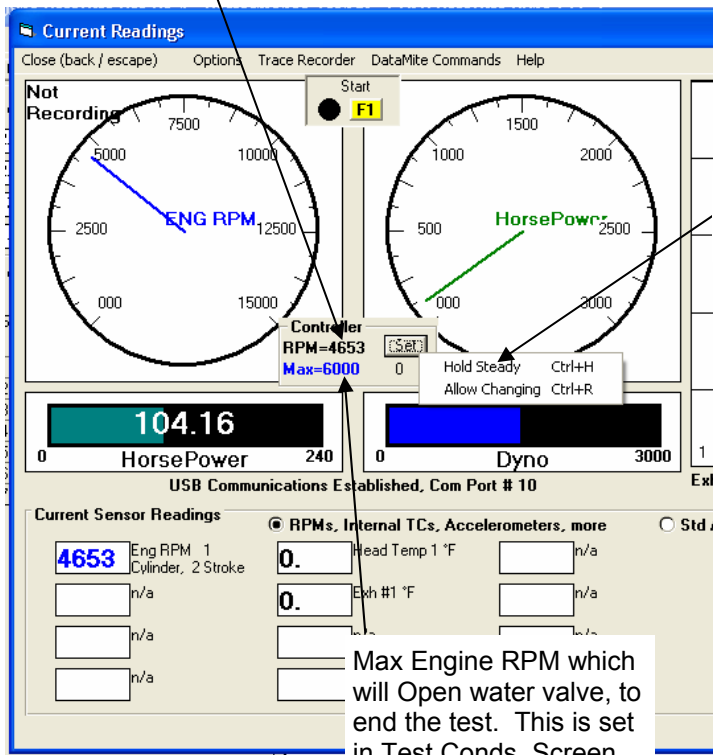
Enter the pulses per revolution (typically number of magnets) for the RPM signal, which is typically the same as the Dyno Wheel RPM in DataMite Specs.

Enter the highest RPM you think the Dyno Wheel will ever see. Do not enter a number higher than needed as it can reduce controller accuracy.

# Prototype Eddy Current Dyno Speed Controller Screens



Current Engine RPM as seen by controller.



Max Engine RPM which will Open water valve, to end the test. This is set in Test Conds. Screen, shown at upper right.

Hold Steady adds the integral term to the PID. This is typically only recommended if you are trying to hold RPM constant. For most all other testing, choose Allow Changing (which is the default).

## Basic Test Procedure:

- Warm up engine and hold RPM low with manual knob.
- Go full throttle and controller should hold RPM relatively low.
- Press F1 to start test and recording will start and controller should allow engine or vehicle to accelerate at a steady rate.
- Then RPM gets to the "Max" shown on screen (set in Test Conditions), recording will stop and controller will ramp the engine down to the approximate starting RPM.
- Control should then be returned to the manual control knob.

## NOTES:

- IMPORTANT: You need some alternative method to shut off the engine should something fail in this prototype controller.
- If you move the manual control knob when computer has control, the control reverts back to the knob. This lets you manually override the computer control should something go wrong.
- Later versions of the software let you do either an accelerating or decelerating type of test.