

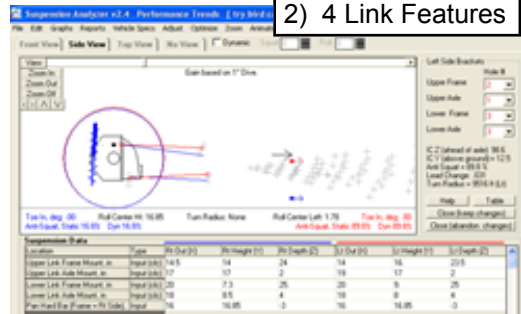
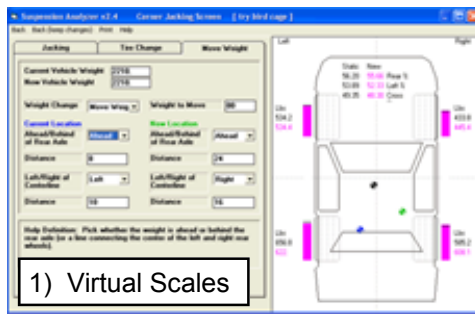
2010: Latest News



Suspension Analyzer v2.4 Released. We've released a major update to our Suspension Analyzer software. It has several new features as shown in Fig 1 & 2 and others, including:

• Added several new types of Rear Suspensions, including:

- Torque Tube Live Axle
- Torque Arm Live Axle
- Trailing Arm and Semi Trailing Arm Independent
- 5 Link Independent
- 'Decoupled' (bird cage)



• Added 'Four Link' features. (Fig

2) These features lets you enter all holes for all 4 link brackets and see all possible combinations, and how each combination will affect anti-squat and roll steer.

• Added 'Virtual Scales' features (Fig 1), which adds 3 different methods of adjusting corner weights: 1) Turning 'Jacking Screws', 2) Changing Tire Size. 3) Adding, removing, or moving ballast weight around..

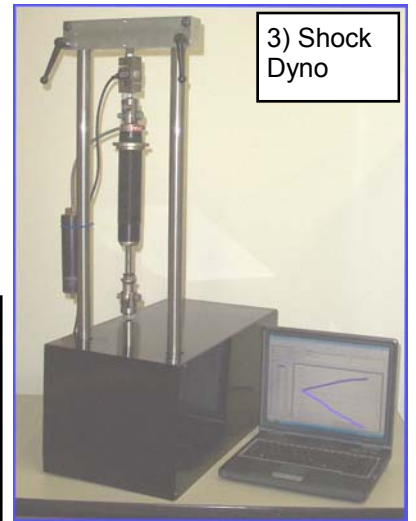
Continued on page 2.

New Shock Dyno will be released in early 2011:

- 1.5HP, 110 VAC motor (ideal for most trailers and generators). Fig 3.
- Up to 2" stroke and 14"/second shock velocity.
- Measures forces over 1000 lbs.
- Optional shock temperature sensor.
- USB computer interface
- Software compatible with Win XP, Vista, Win 7.

Visit our website for more info.

4) DataMite Micro with Blowby Readout/Logger



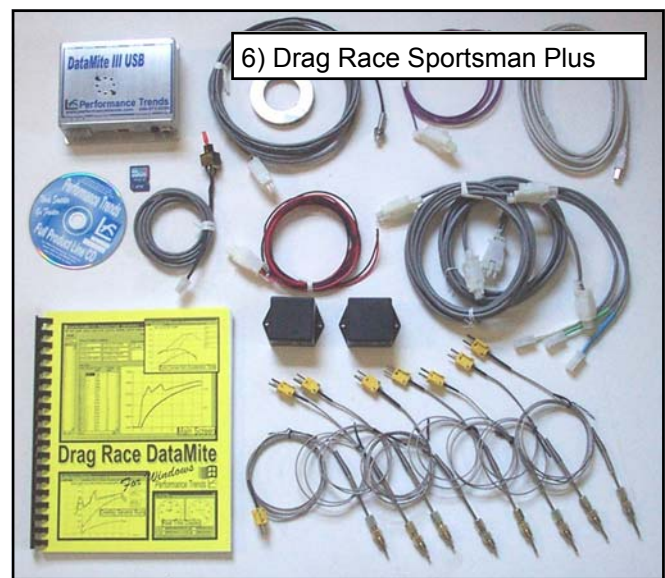
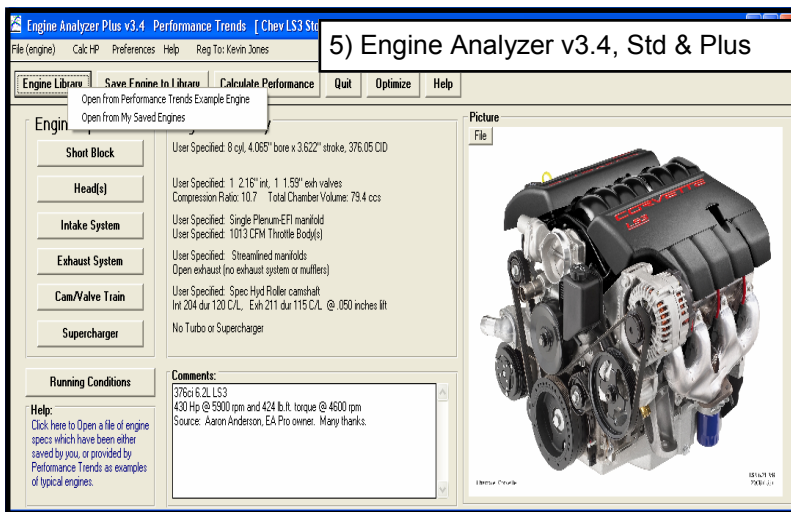
DataMite Micro will be released in early 2011. This

hand held "workhorse" will have several applications for track and shop testing and data logging, either with or without a computer. Watch our website for releases. Picture shows readout and logger for our Blow By Sensor. Fig 4

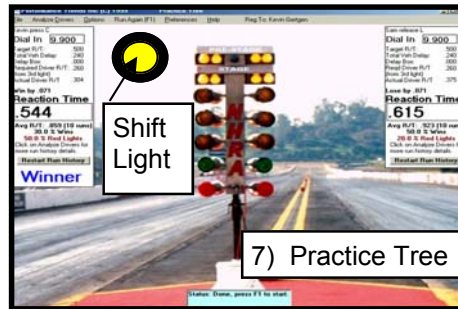
Engine Analyzer v3.4 was released in 2010, both standard and Plus versions. Both include hundreds of new components, new complete engines, and features. The Plus now has 20 features above the standard version. Fig 5

Miscellaneous Updates in 2010:

- We've moved to a larger facility. Our new address is 31531 W Eight Mile Rd, Livonia, MI 48152 USA.
- Drag Race Sportsman Plus DataMite package includes 8

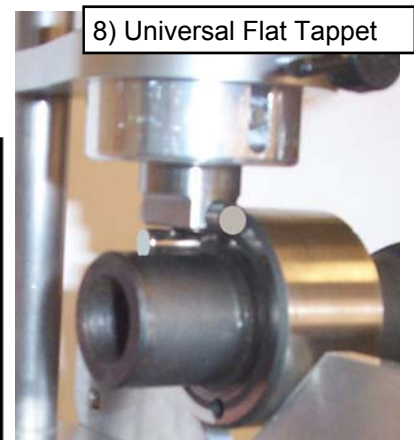


- EGTs and more for \$1299. Fig 6
- Port Flow Analyzer updated to work with all SuperFlow's new SF280, SF450 and SF750 benches.
- Drag Race Pro updated to work with new USB Weather Station and Wind Wizard.
- Practice Tree Plus, with shift light. Fig 7
- Cam Test Stand now has Universal Flat follower, which also allows for measuring dowel pin or keyway location. Fig 8
- Many new DataMite data logger software features, both for Dyno and Vehicle applications.



Shift Light

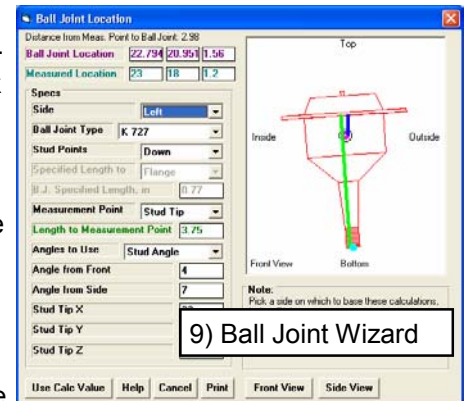
7) Practice Tree



8) Universal Flat Tappet

Suspension Analyzer v2.4 Released, cont.

- Watts link pivot can now be mounted on either the axle or the frame of the car.
- Program now highlights the appropriate cell in the spreadsheet when you click on a point in the layout drawing.
- Added 'Bigger' Preference so you can select to make the layout drawing bigger for easier viewing.
- Now all versions have the Ball Joint Wizard for more accurately calculating the location of the center of rotation of the ball joint. Fig 9



9) Ball Joint Wizard

Demo Movie Files have been produced to better explain how to setup and use the different features of several products. These are movies you can watch on your PC and listen as we show you exactly what to do, step by step. These are now available on all our CDs or can be download from our website by clicking on Support (at the top of the webpage), then Movie Demo Files. Even if you are already using a product, we invite you to watch the movies, as it may explain a feature you did not even know existed.

Plans for 2011 include:

- Drag Racing Analyzer v3.4 coming with new features and example component and complete vehicle files. One major new feature is the ability to include a picture file with your data. Now if you share a vehicle file your friends will see what your car looks like. Fig 11.
- Drag Racing Analyzer v3.4 PLUS version is planned with more enhanced features, including interfacing to our Mini USB Weather Station. Figs 10.
- DataMite Dyno Speed Control and more input channels are on the top of our list for 2011 for the DataMite.
- We're always working on new products and features which we don't want to discuss until we're very close release. So, get on our email mailing by sending us an email, and watch our website for these new releases. Also, if you have a suggestion for a product, please let us know.
- The DataMite Micro is expected to have lots of new applications being released all through 2011. These applications are so "ground breaking", don't even want to talk about them. Make sure you get our email newsletters so you will be notified when these applications are released.

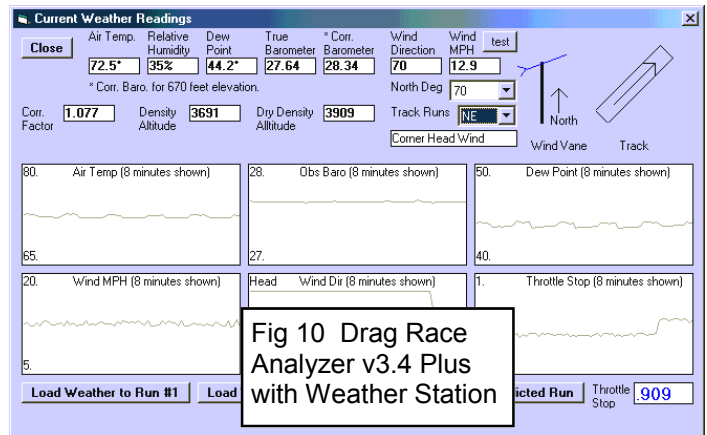


Fig 10 Drag Race Analyzer v3.4 Plus with Weather Station

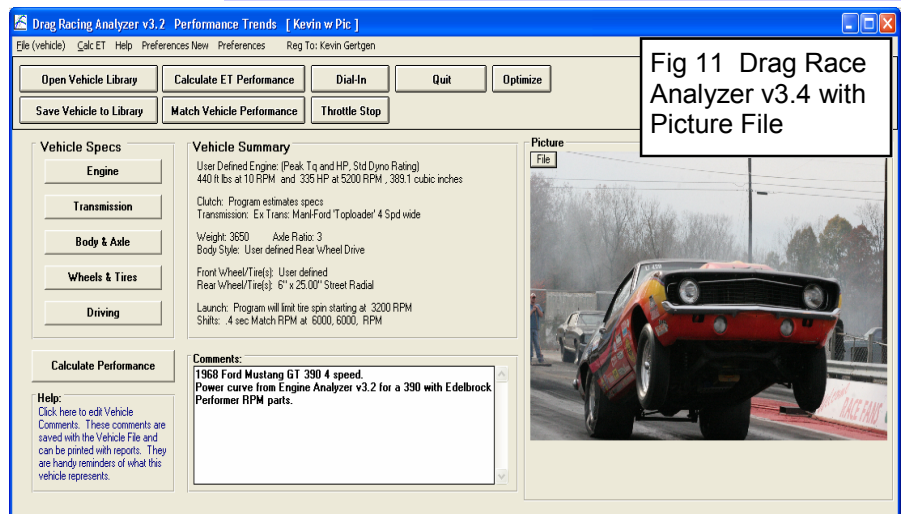


Fig 11 Drag Race Analyzer v3.4 with Picture File